

Classification	NAPOPC_CE5 FAQ				No.	1-008-E	
Author	Eva	Version	1.0.0	Date	2011/3/11	Page	1/9

# How to configure NAPOPC\_CE5 in VP-23W1 with resolution 640 x 480?

Applies to :

Platform	OS version	NAPOPC version
ViewPAC	CE5	NAPOPC_CE5 v2.20

The display of VP-23W1 controller is a 3.5" TFT LCD with the resolution of 320 x 240, but the configuration of NAPOPC\_CE5 needs the resolution 640 x 480. In setup steps, user has to configure the NAPOPC\_CE5 of the VP-23W1 via the software VCEP in PC remotely.

**The steps:**

**Step 1. Download/Install the NAPOPC\_CE5 to VP-23W1**

This step can be ignored if there is a new version of NAPOPC\_CE5 in VP-23W1 PAC already.

**Step 2. Set up the display to resolution 640 x 480 (VP-23W1 controller site)**

The ViewPAC Utility V2.0.2.2 or later version can set up the resolution to 640 x 480. For the latest version, please download the ViewPAC Utility at the following web site.

[http://www.icpdas.com/products/PAC/viewpac/download/viewpac/download\\_utility.htm](http://www.icpdas.com/products/PAC/viewpac/download/viewpac/download_utility.htm)

**Step 3. Set up the NAPOPC\_CE5 in VP-23W1 via the VCEP in the PC (PC site)**



**Step 1: Download/Install the NAPOPC\_CE5 to VP-23W1**

1.1 Download the NAPOPC\_CE5 for ViewPAC.

Download all files in the folder.

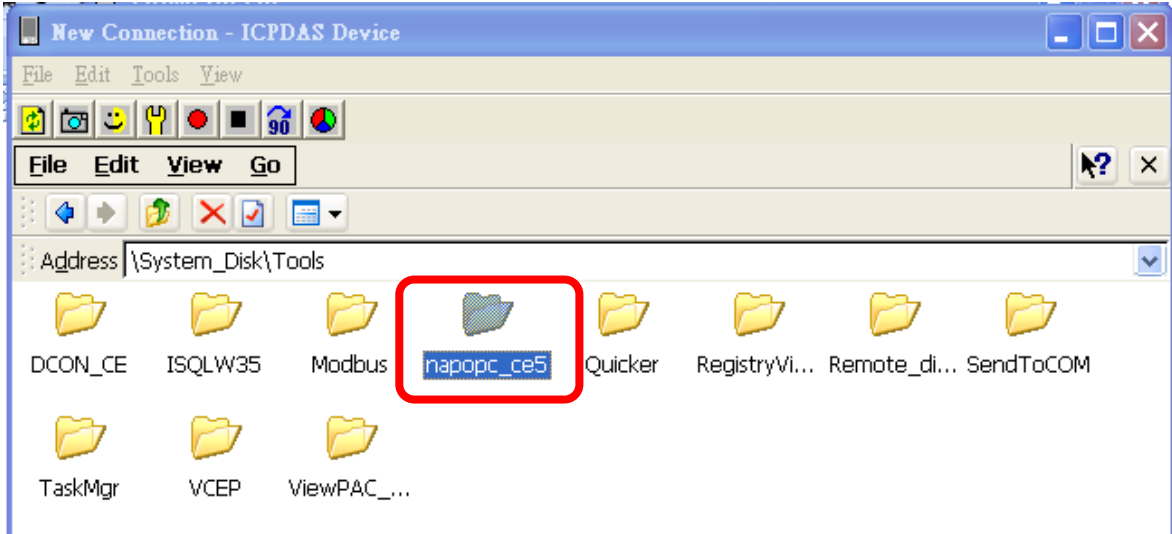
Web site: <http://opc.icpdas.com/download.htm#ViewPAC> , or ftp site

[ftp://ftp.icpdas.com/pub/cd/winpac/napdos/vp-2000\\_ce50/system\\_disk/tools/napopc\\_ce5/](ftp://ftp.icpdas.com/pub/cd/winpac/napdos/vp-2000_ce50/system_disk/tools/napopc_ce5/) .

ViewPAC				
File	Version	Size	Last Update	Download
Main Program	V2.20	1.38 MB	Nov/23/2010	
Manual	V2.20	3.2 MB	Nov/23/2010	

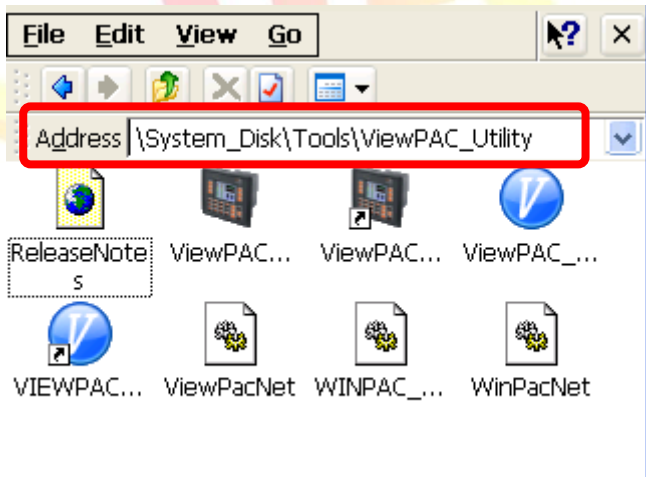
Classification	NAPOPC_CE5 FAQ				No.	1-008-E	
Author	Eva	Version	1.0.0	Date	2011/3/11	Page	2/9

1.2. Create a folder “**napopc\_ce5**” under the directory **\System\_Disk\Tools\** . Copy all the files into the new folder.



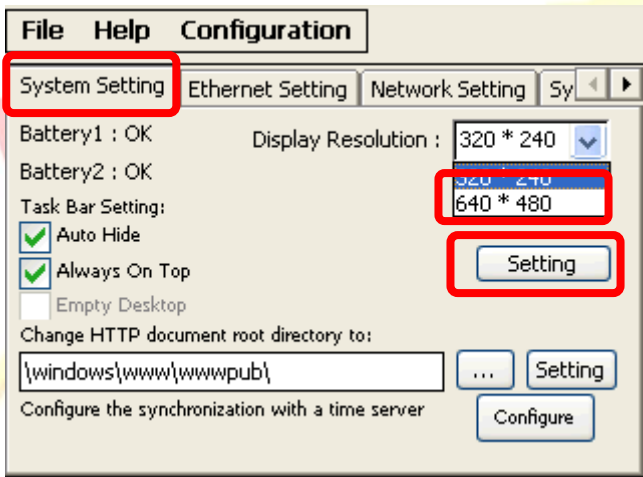
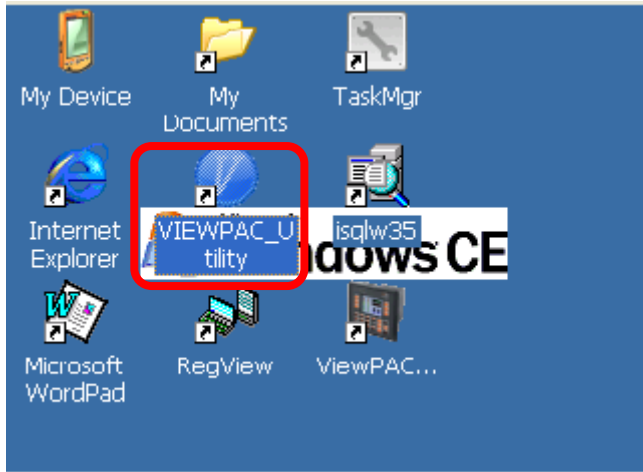
**Step 2: Set up the display to resolution 640 x 480 (VP-23W1 controller site)**

2.1 Copy and install ViewPAC utility **V2022** or a later version to VP-23W1 under the directory **\System\_Disk\Tools\ViewPAC\_Utility**

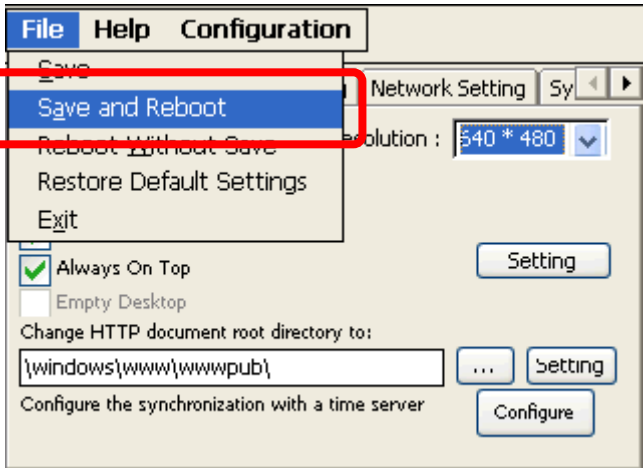


Classification	NAPOPC_CE5 FAQ				No.	1-008-E	
Author	Eva	Version	1.0.0	Date	2011/3/11	Page	3/9

2.2 Execute ViewPAC\_Utility on the desktop, and set up the display to resolution “640\*480” .

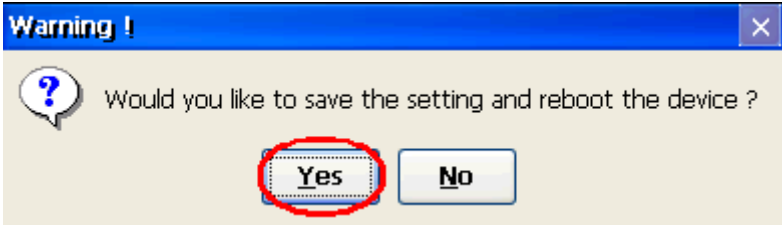


2.3 Save and reboot the VP-23W1.



Classification	NAPOPC_CE5 FAQ				No.	1-008-E	
Author	Eva	Version	1.0.0	Date	2011/3/11	Page	4/9

2.4 Click “Yes” to reboot the controller.



2.5 Before reboot the VP-23W1, please turn the Rotary Switch to “mode 6”. When the ViewPAC reboot, it will auto-execute the execution file “v\_remote.exe” of VCEP.

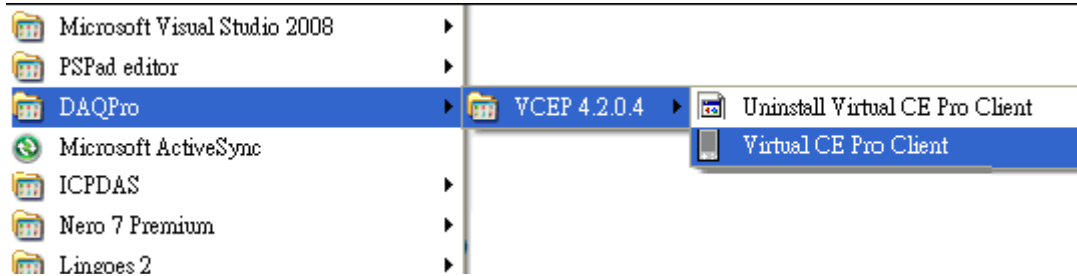
Note: The VP-23W1 display will be flash after setting to resolution 640 x 480 and rebooting, and need to be monitored remotely via the VCEP from PC.



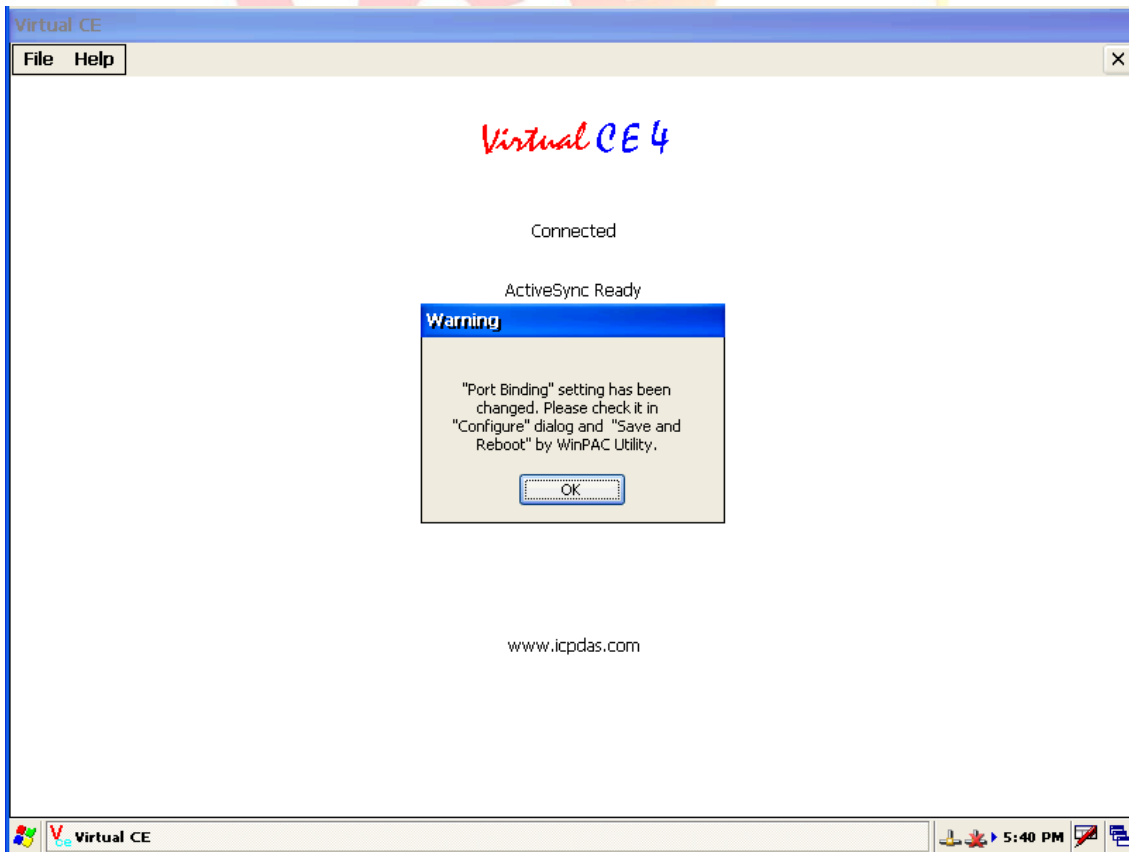
Classification	NAPOPC_CE5 FAQ				No.	1-008-E	
Author	Eva	Version	1.0.0	Date	2011/3/11	Page	5/9

**Step 3: Set up the NAPOPC\_CE5 in VP-23W1 via the VCEP in the PC (PC site)**

3.1 Execute the VCEP (Virtual CE Pro Client) in PC. If you do not have VCEP, please download the software at [http://www.icpdas.com/products/PAC/wincon-8000/wincon\\_VirtualCE.htm](http://www.icpdas.com/products/PAC/wincon-8000/wincon_VirtualCE.htm)

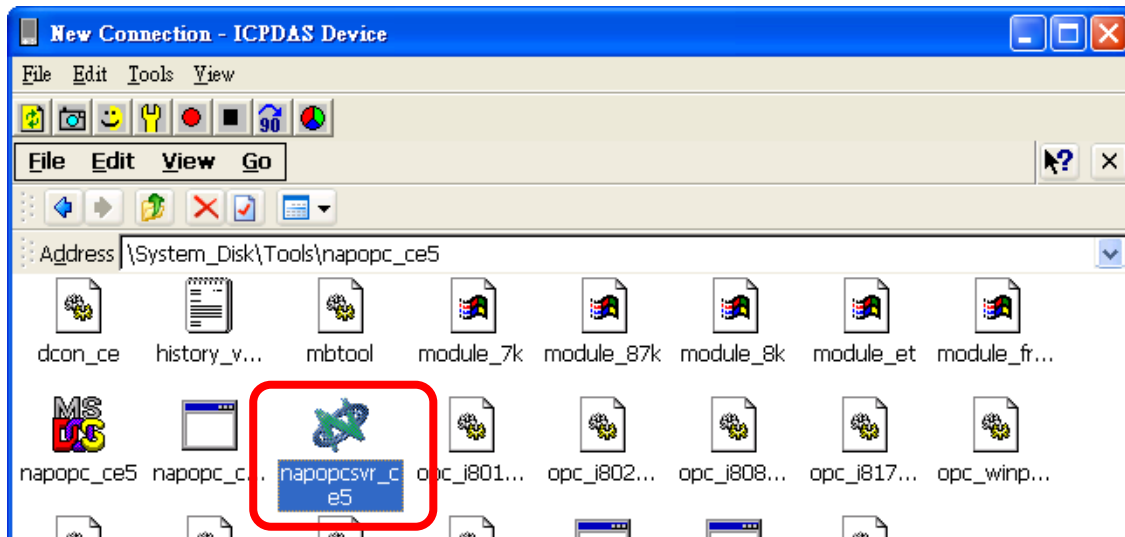


3.2 After connecting the host PC and VP-23W1, the VCEP (Virtual CE) will be on the desktop of VP-23W1.

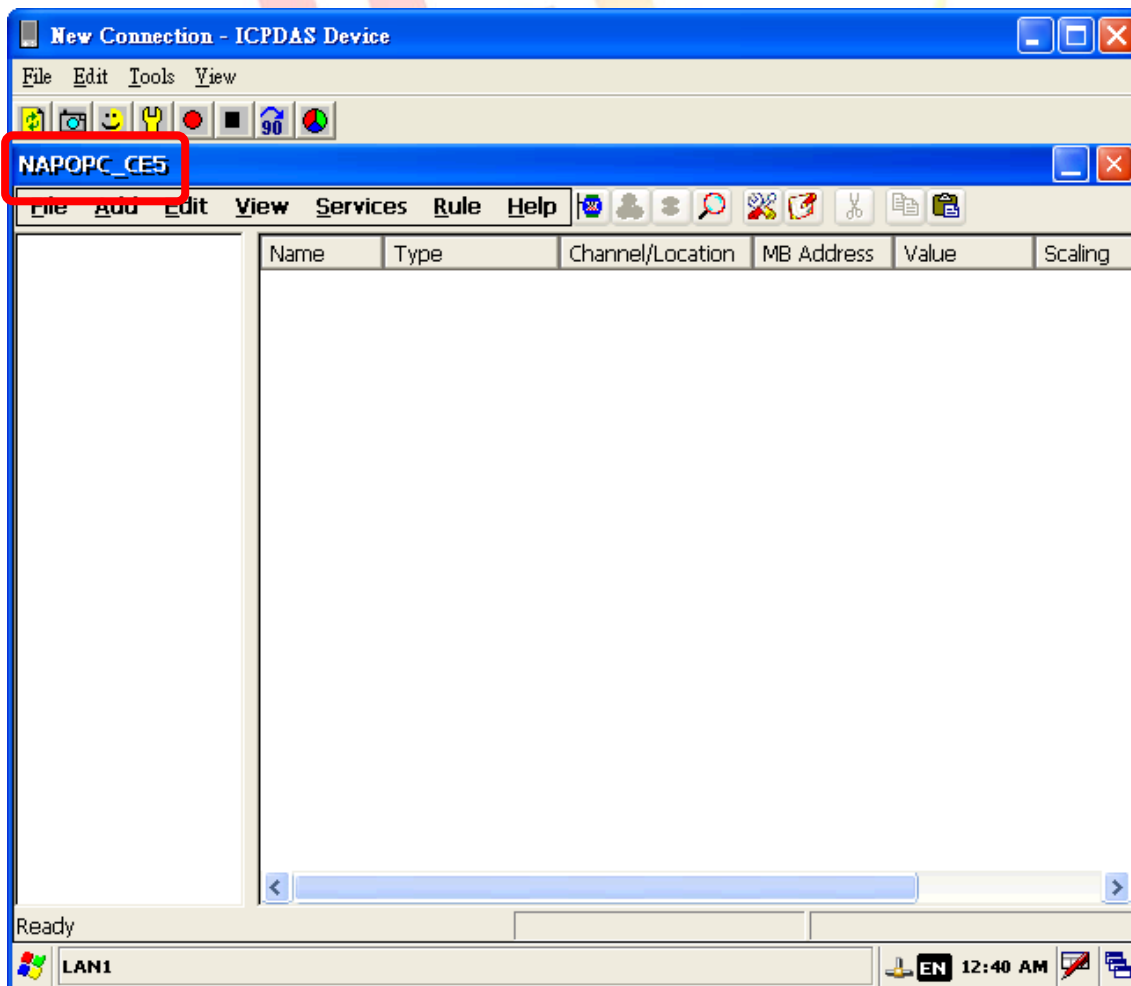


Classification	NAPOPC_CE5 FAQ				No.	1-008-E	
Author	Eva	Version	1.0.0	Date	2011/3/11	Page	6/9

3.3 Execute the NAPOPC\_CE5 file of ViewPAC in the folder “NAPOPC\_CE5” .

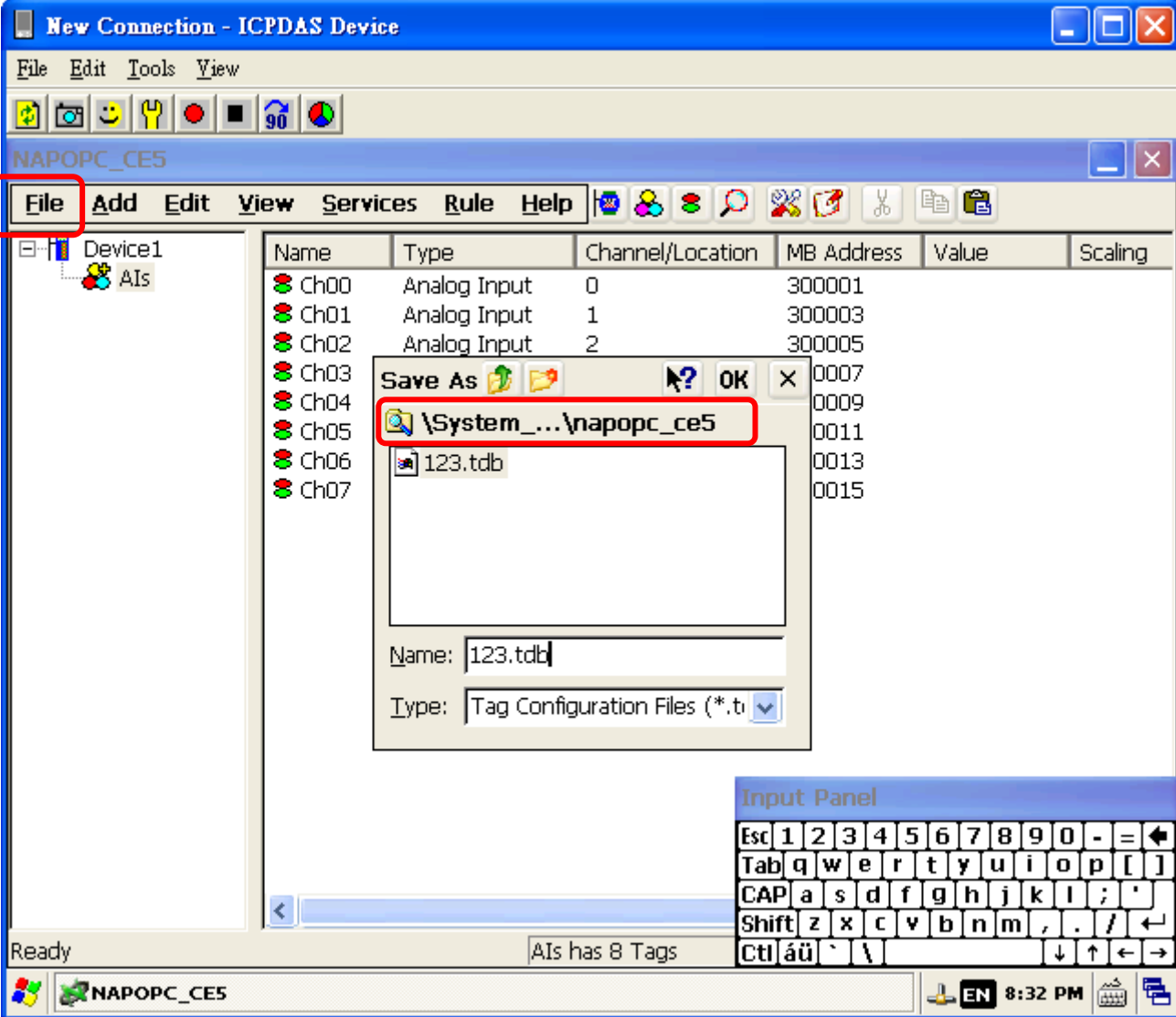


3.4 Use the VCEP in the PC end to configure NAPOPC\_CE5 in the VP-23W1.



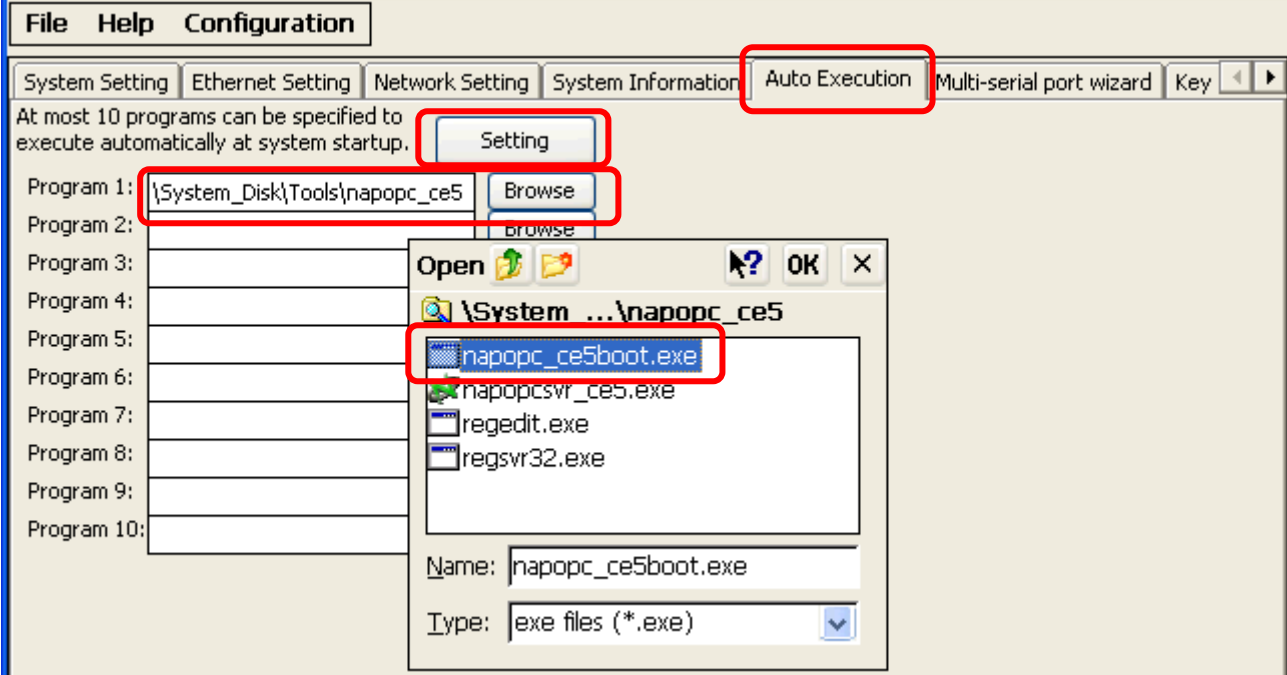
Classification	NAPOPC_CE5 FAQ				No.	1-008-E	
Author	Eva	Version	1.0.0	Date	2011/3/11	Page	7/9

3.5 After configuring the NAPOPC\_CE5, save the project file (xxx.tdb) to a suitable folder.  
 Ex: \System\_Disk\Tools\napopc\_ce5\123.tdb

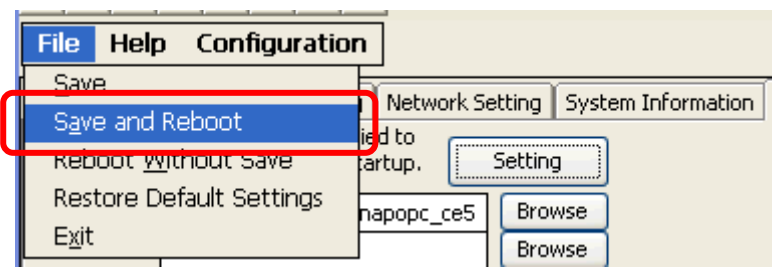
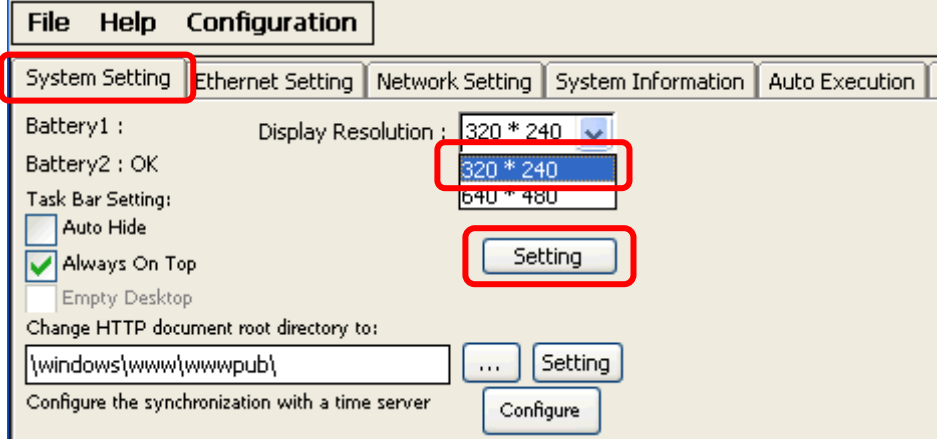


Classification	NAPOPC_CE5 FAQ				No.	1-008-E	
Author	Eva	Version	1.0.0	Date	2011/3/11	Page	8/9

3.6 Run ViewPAC Utility, click the “Auto Execution” tab, add the “napopc\_ce5boot.exe” in the directory “\System\_Disk\Tools\napopc\_ce5” to be one of the auto execution programs, and click “Setting”.



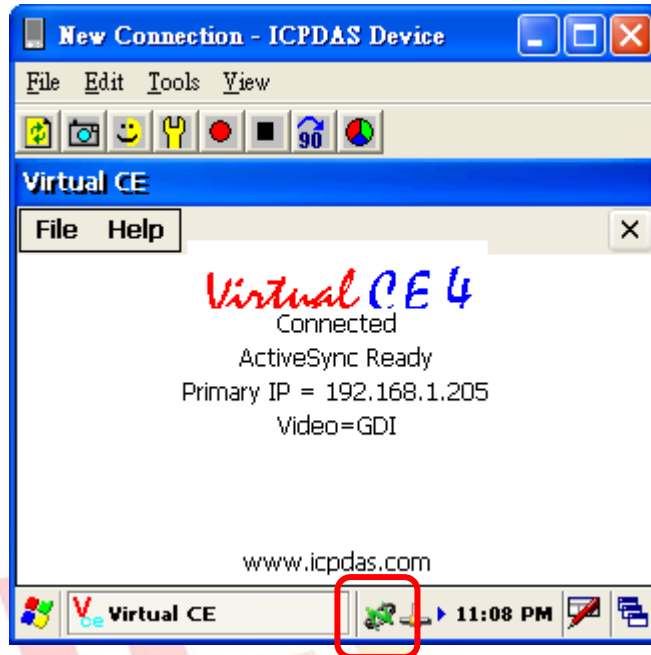
3.7 Set the display resolution back to “320 x 240”, and then click “Setting”. Save and reboot the VP-23W1.





Classification	NAPOPC_CE5 FAQ				No.	1-008-E	
Author	Eva	Version	1.0.0	Date	2011/3/11	Page	9/9

3.8 After rebooting, VP-23W1 will auto execute the NAPOPC\_CE5 and show the smallest icon in the tool bar.



Note: When rebooting, the VCEP will reboot also, because the Rotary Switch was set to "mode 6" in step 2.5. Please turn it to the normal mode "mode 0" if you don't need to auto execute the VCEP.